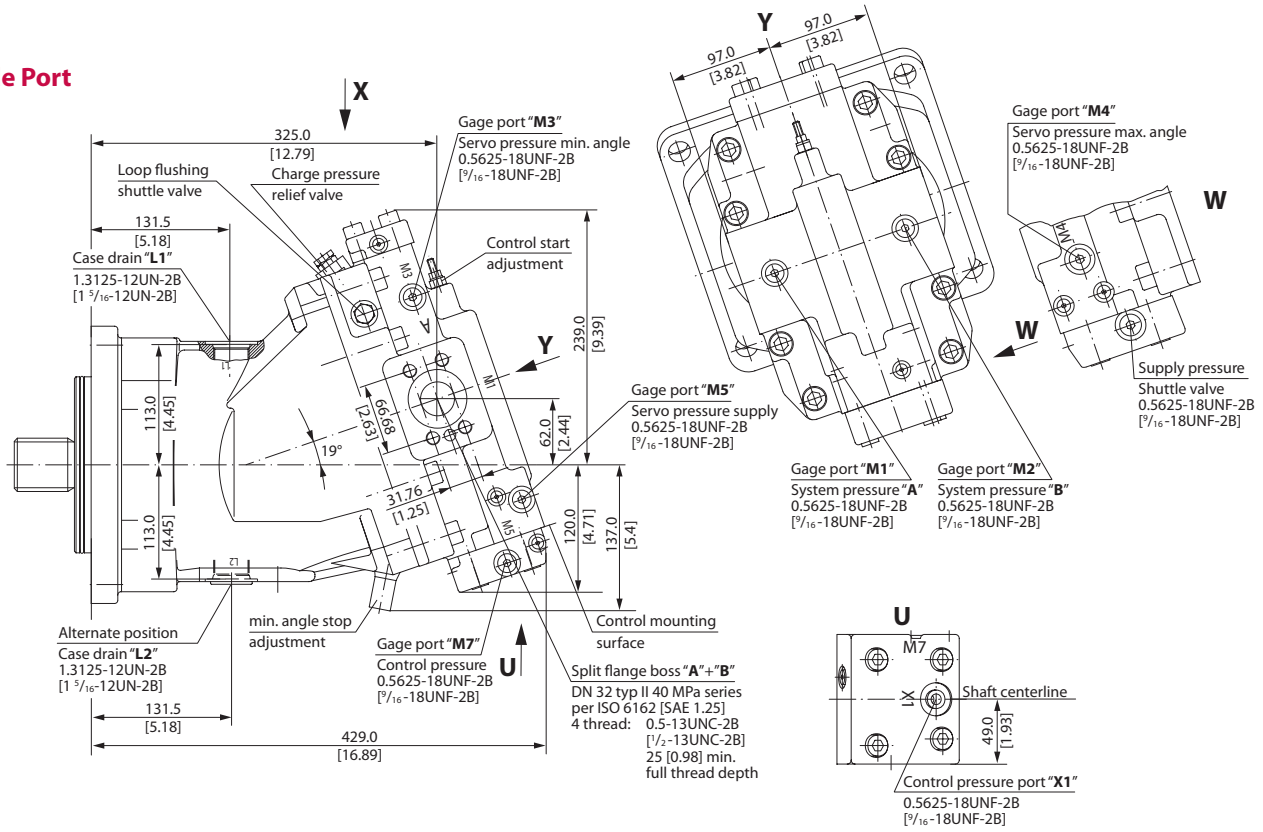


**SAE Flange Design
 per ISO 3019/1**

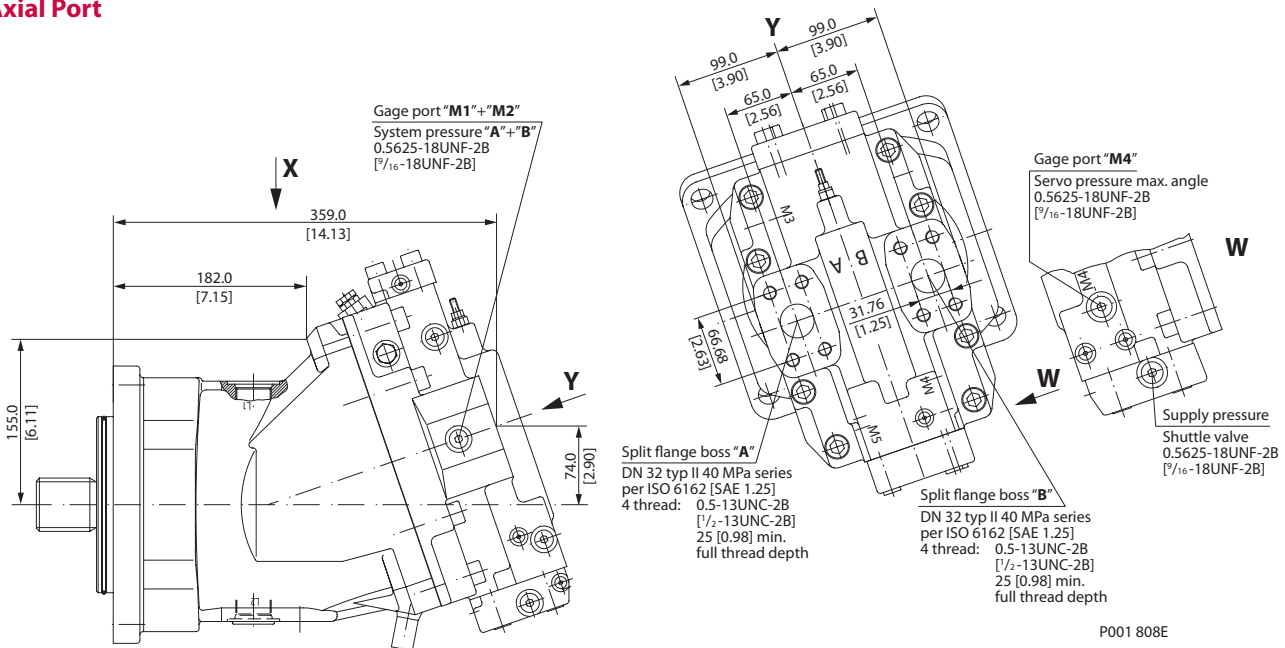
51V250 Proportional and Two-Position Control, HZB1

mm
 [in]

Side Port



Axial Port

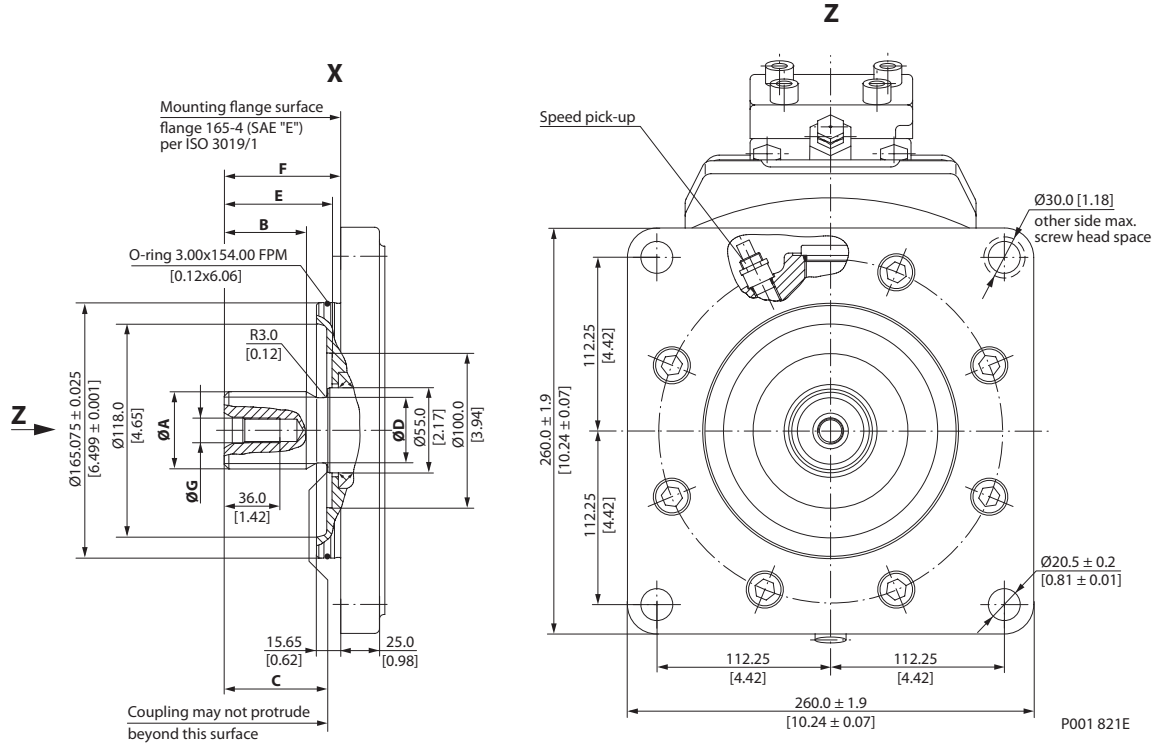


P001 808E

SAE Flange Design
 per ISO 3019/1
 (continued)

Shaft Options – 51V250

mm
 [in]



Shaft Spline Data				
Shaft option	F2		C8	
Dimension	mm	[in]	mm	[in]
Number of teeth	15		27	
Pitch	8/16		16/32	
Pressure angle	30°			
Spline	ANSI B92.1-1970 class 5 flat root side fit			
Pitch dia	47.625	[1.875]	42.862	[1.688]
A	49.99	[1.97]	43.96	[1.73]
B	53.00	[2.09]	55.00	[2.17]
C	67.00±0.5	[2.64]	67.00±0.5	[2.64]
D	42.20	[1.66]	39.60	[1.56]
E	70.00±1.1	[2.76]	70.00±1.1	[2.76]
F	75.40±0.7	[2.97]	75.40±0.7	[2.97]
G	0.625-11UNC-2B [5/8-11UNC-2B] allowed torque in thread max. 200 Nm [1770 lbf·in]			

Flow into port **A** results in **CW** rotation of output shaft.
 Flow into port **B** results in **CCW** rotation of output shaft.
 Shaft rotation is determined by viewing from shaft end.
 Ports with O-ring seal and inch threads shall be in accordance with ISO 11926/1.
 Splite flange boss A and B per ISO 6162 is identical with high pressure series SAE J518 code 62 (6000 psi).
 Contact your Sauer-Danfoss representative for specific installation drawings.